

TBC 卡式組立端子盤

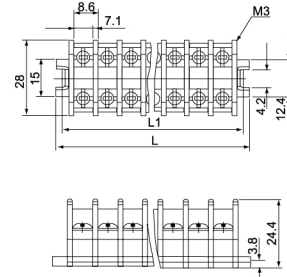
Cassette Assembly Terminal Block

特點 Features

- 10P以下，免除串接導軌，2P直接互壓即可，安裝方便快速
- 10P以上長度，附加導軌，20P以上可分成二段或三段先固定一段，可不受長度限制加長，且十分堅固
- PC材料，耐高溫，韌性強不碎裂
- Under 10P: no need for concatenated guide rail. 2P: can be mutual pressed directly. Installation is convenient and fast
- More than 10P: additional guide rail. More than 20P: can be divided into two or three parts and settle one part, length is not limited
- PC material, heat resistance, strong structure

外觀和尺寸 Appearance and Dimension

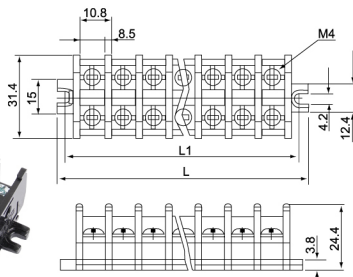
TBC-10



L=16.7+8.6xn
L1=10.3+8.6xn
n=P 數 No. of poles

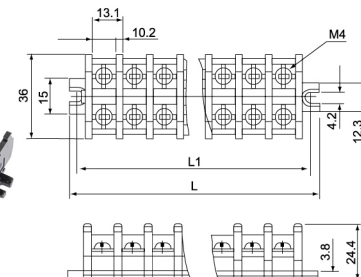
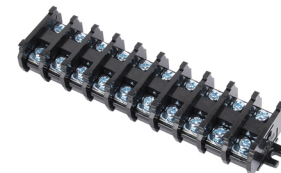


TBC-20



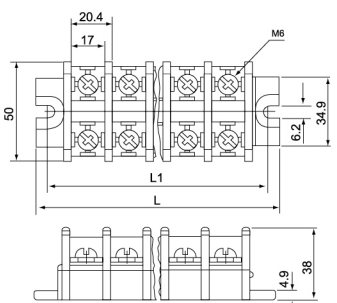
L=17.3+10.8xn
L1=11.2+10.8xn
n=P 數 No. of poles

TBC-30



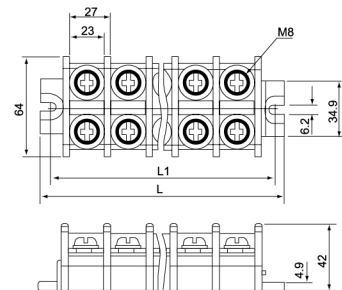
L=18+13.1xn
L1=11.5+13.1xn
n=P 數 No. of poles

TBC-60



L=33.5+20.4xn
L1=18.5+20.4xn
n=P 數 No. of poles

TBC-100



L=34+27xn
L1=19+27xn
n=P 數 No. of poles

TBR 板式螺釘壓綫端子排

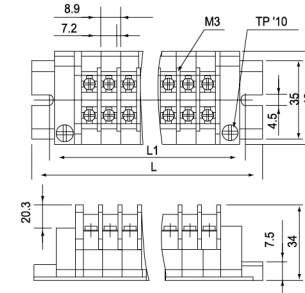
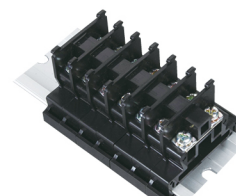
Plate Type Screw Crimping Terminal Block

特點 Features

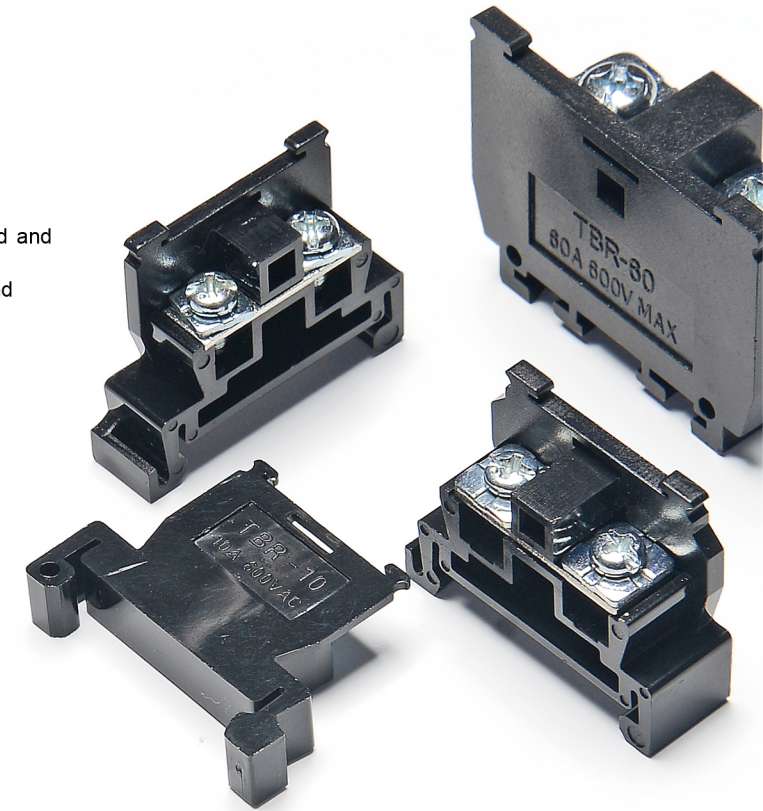
- 組合時，以端子盤之一端勾住道軌另一端用力壓下即可
- 拆卸時，以一字起子插入有溝槽之一端，往外撬起即可拆下
- PC材料，耐高溫，韌性強不碎裂
- Combining: one terminal plate end hooks slide under the skeletons end and press hard
- Disassembly: with straight screwdriver stand into a groove, pry up one end
- PC material, heat resistance, strong structure

外觀和尺寸 Appearance and Dimension

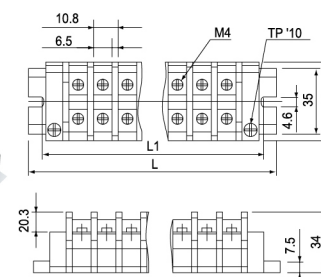
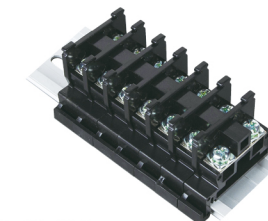
TBR-10



L=38+8.9 × n
L1=22.5+8.9 × n
n=P 數 No. of poles

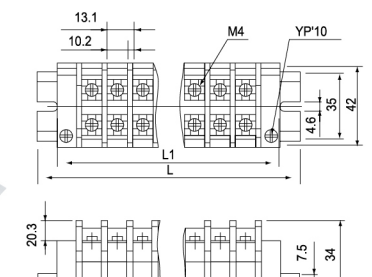


TBR-20



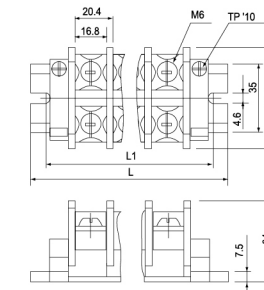
L=38+10.8 × n
L1=22.5+10.8 × n
n=P 數 No. of poles

TBR-30



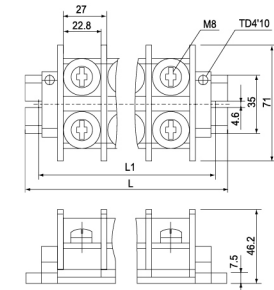
L=38+13.1 × n
L1=22.5+13.1 × n
n=P 數 No. of poles

TBR-60



L=38+20.4 × n
L1=22.5+20.4 × n
n=P 數 No. of poles

TBR-100



L=38+27 × n
L1=22.5+27 × n
n=P 數 No. of poles